

One Story Ranch Series



Custom Homes Made Simple

Cullen Brothers builds to the highest standards.

Cullen Brothers makes building a custom home simple and beautiful! With our numerous ranch floor plans, we can custom design around your individual taste and budget. You can choose from 2500 square feet of living space up to 5000 square feet. If you are considering building a new home, give us an opportunity to demonstrate what sets us apart. Say goodbye to the production look and feel of a box built home and hello to a custom, quality built home from Cullen Brothers!



Custom Homes

www.cullenbrothers.com

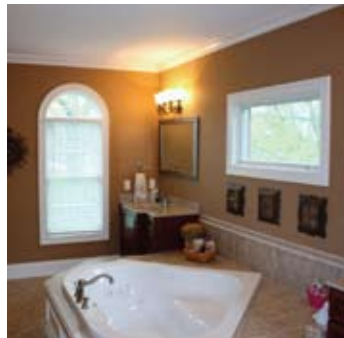
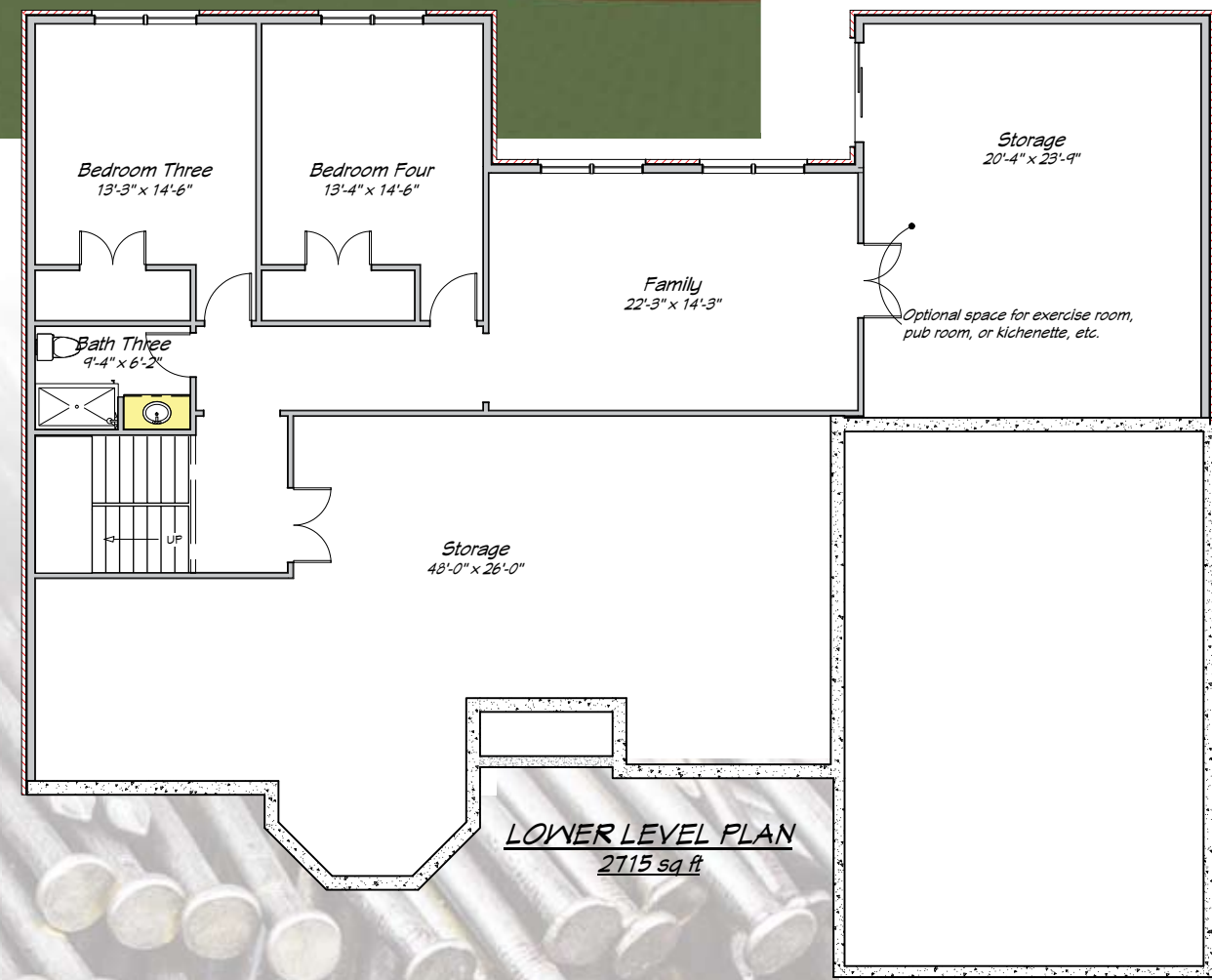
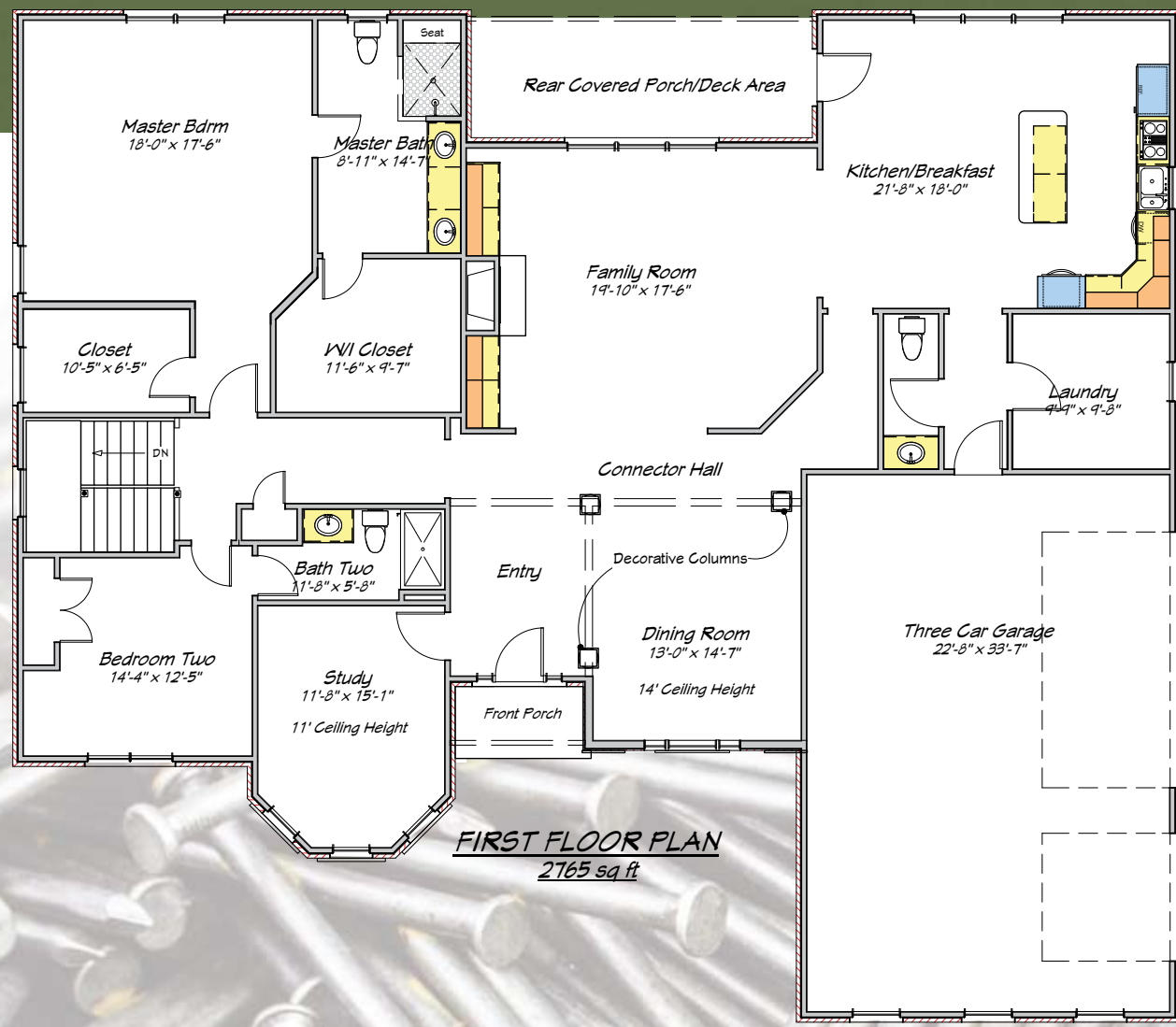
Since 1997

Athena	2, 3
Jamestown.....	4, 5
Jason Michael	6, 7
Kingsdale.....	8, 9
Lavender.....	10, 11
Onay-Hill.....	12, 13
Rachel Marie.....	14, 15
Saint Joseph	16, 17
Saint Matthews	18, 19
Tiffany	20, 21

Athena

The Athena

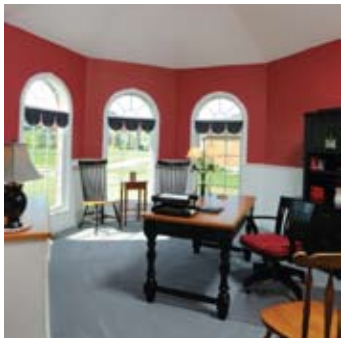
The Athena is a stately ranch floor plan with approximately 2800 square feet of living space on the first floor. This four bedroom floor plan includes three and one half baths, three car garage, covered porch, finished basement, and variety of first floor ceiling heights ranging from 9', 11', and 14'. Basement finishing can easily be expanded to provide a total living space of over 4500 square feet.



Jamestown

The Jamestown

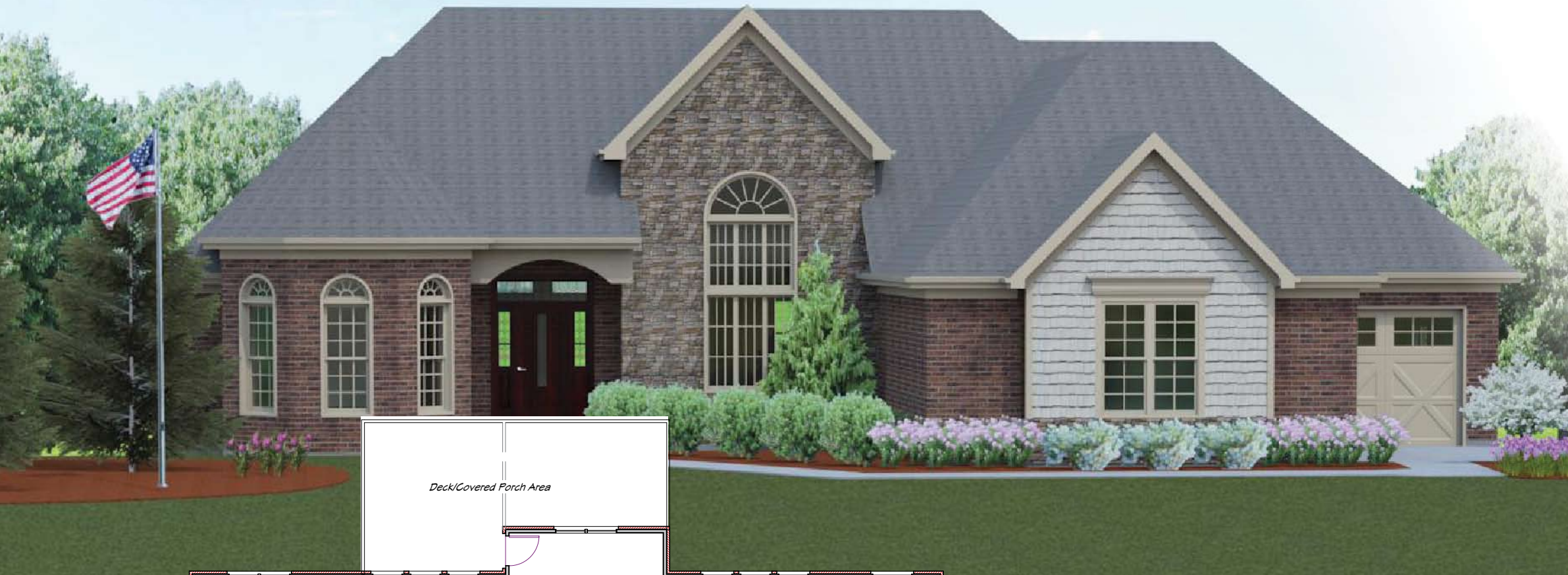
The Jamestown is a very functional ranch floor plan with approximately 2500 square feet of living space on the first floor. This 3 bedroom floor plan includes all bedrooms on the first floor, two and one half baths, 2 car garage, covered porch, conveniently located laundry, and mudroom. A custom design finished basement can easily be provided expanding this plan to over 3500 square feet of total living space.



Kingsdale

The Kingsdale

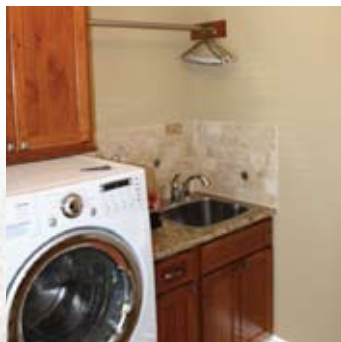
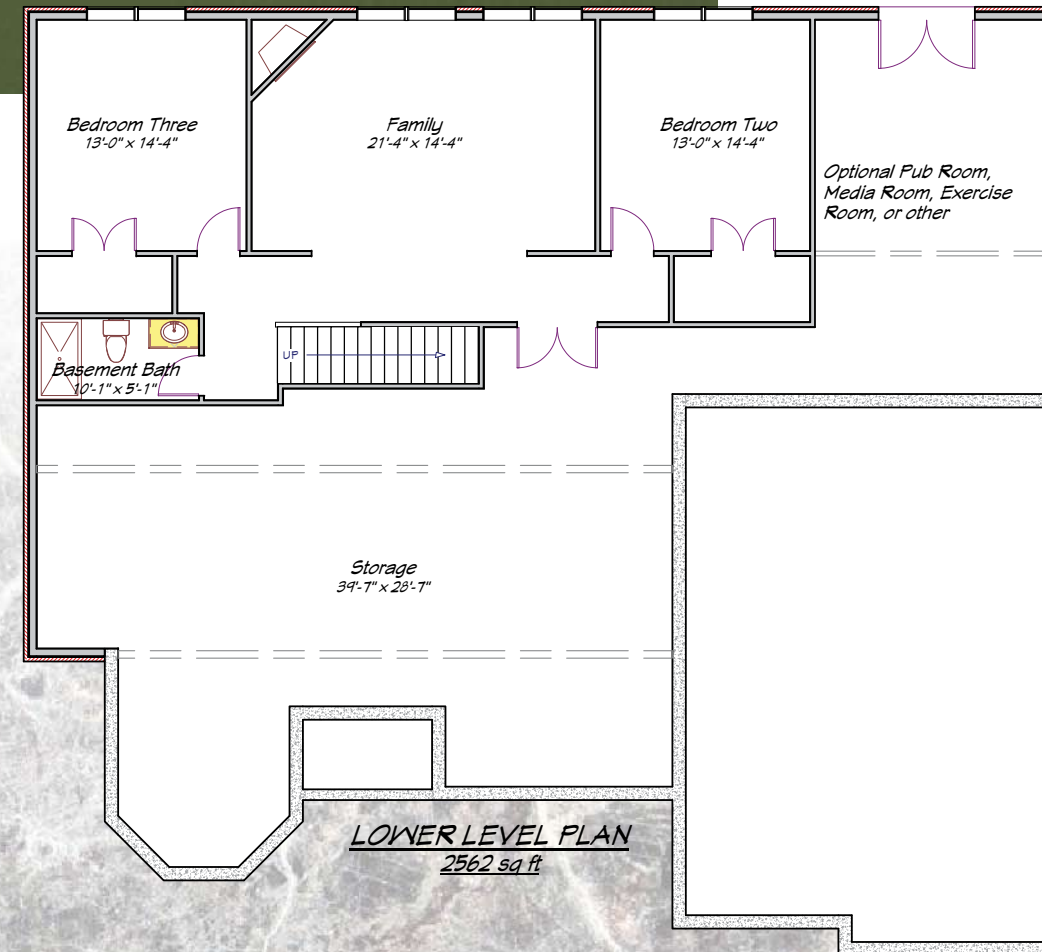
The Kingsdale ranch floor plan caters towards today's active families with approximately 2800 square feet of living space on the first floor. This three bedroom floor plan includes all bedrooms on the first floor, first floor study, dining room, very large three car garage, mudroom, and a direct connect laundry to the master closet. Customized basement finishing can easily be provided around your individual needs.



Jason Michael

The Jason Michael

The Jason Michael ranch floor plan caters towards the empty nesters with approximately 2500 square feet of living space on the first floor. This three bedroom floor plan includes a first floor master, two and one half baths, three car garage, and a large pantry, and laundry room. The finished basement expands the total living space to over 3500 square feet and can be customized around your individual needs.



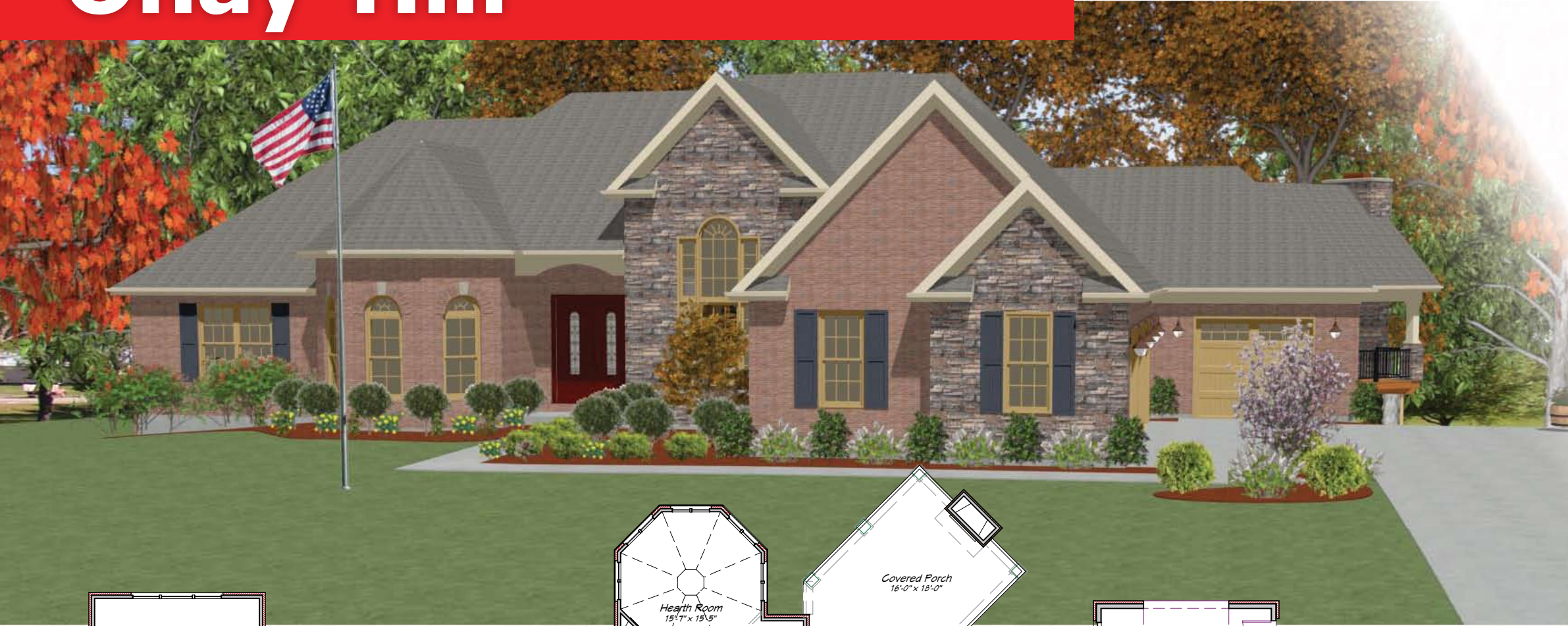
Lavender

The Lavender

The Lavender is a ranch floor plan with a unique combination of curved roof lines, barrel dormers, and turrets. With approximately 2800 square feet of living space on the first floor, this three bedroom floor plan includes all bedrooms on the first floor, 16' dining room, 3 car garage, covered porch, mudroom, and 10' ceiling in the great room. Customized basement finishing can easily be provided around your individual needs expanding the total living space to over 4000 square feet.

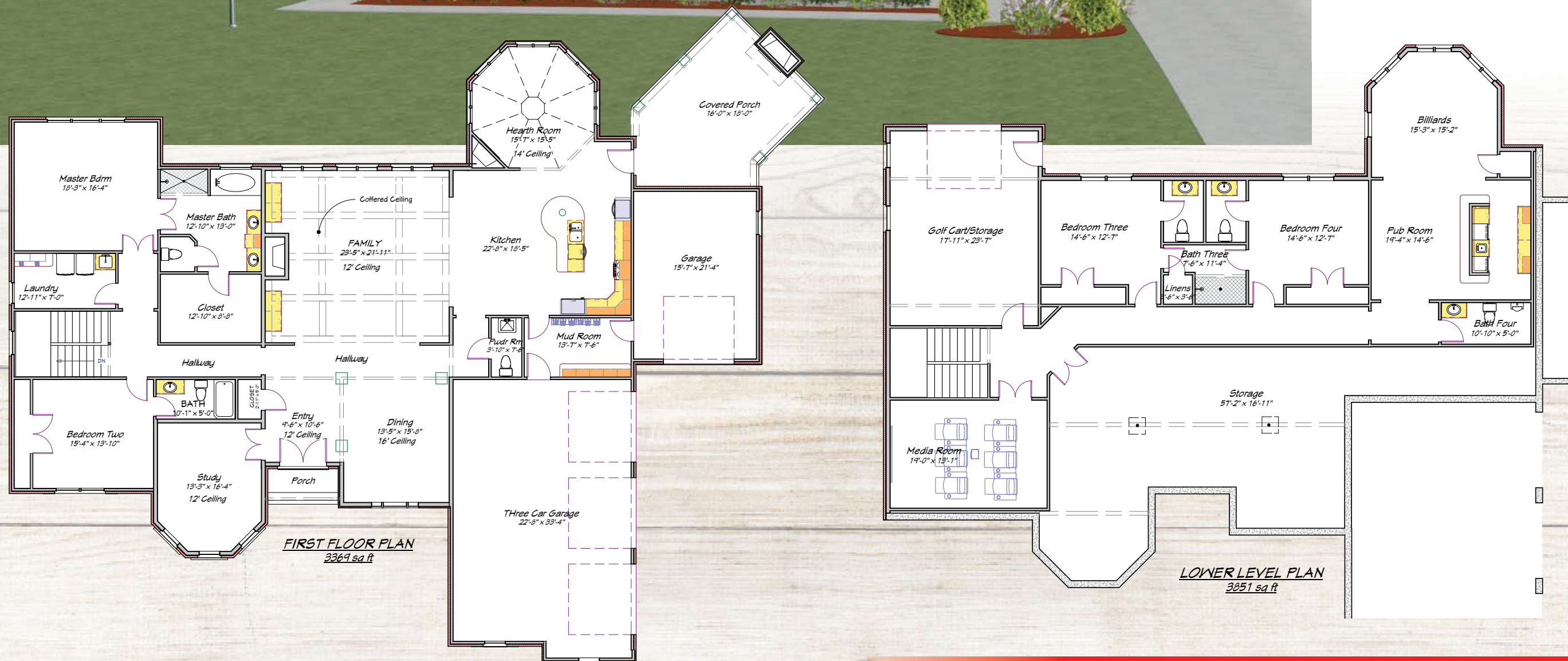


Onay-Hill



The Onay-Hill

The Onay-Hill is a similar plan featured in the 2014 Northern Kentucky Cavalcade of Home show. This ranch floor plan has approximately 3000 square feet of living space on the first floor. This four bedroom floor plan includes vaulted turret in the breakfast room, coffered ceiling in the great room, large covered porch, 16' dining room ceiling, three car garage, mudroom, and 11' ceiling foyer and study. Basement finishing could easily be expanded to included five or six bedrooms, bar, recreational room, and theater room.



Rachel Marie

The Rachel Marie

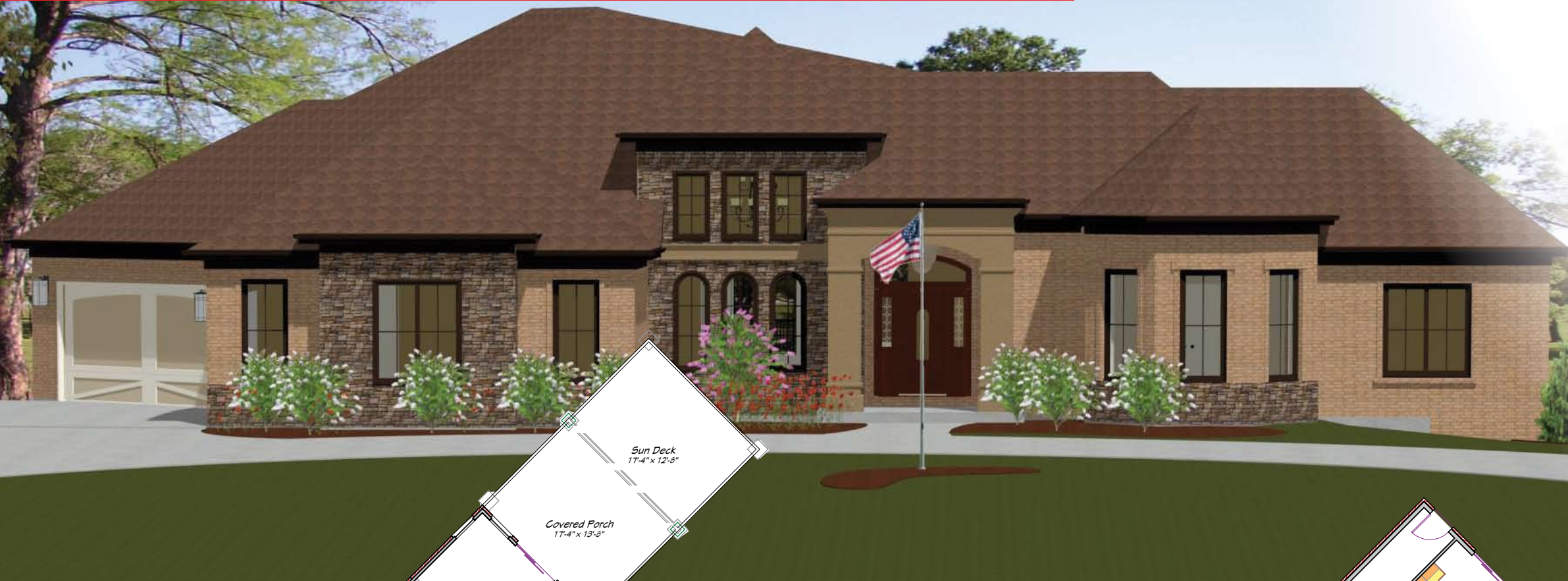
The Rachel-Marie is an economical, spacious, well designed ranch floor plan with approximately 2550 square feet of living space on the first floor. This 3 bedroom floor plan includes three car side entry garage, dining room or study, large master closet, large walk-in pantry, and a handsome exterior. Custom Basement finishing to suit is available and can expand the total living space to over 4000 square feet.



Saint Joseph

The Saint Joseph

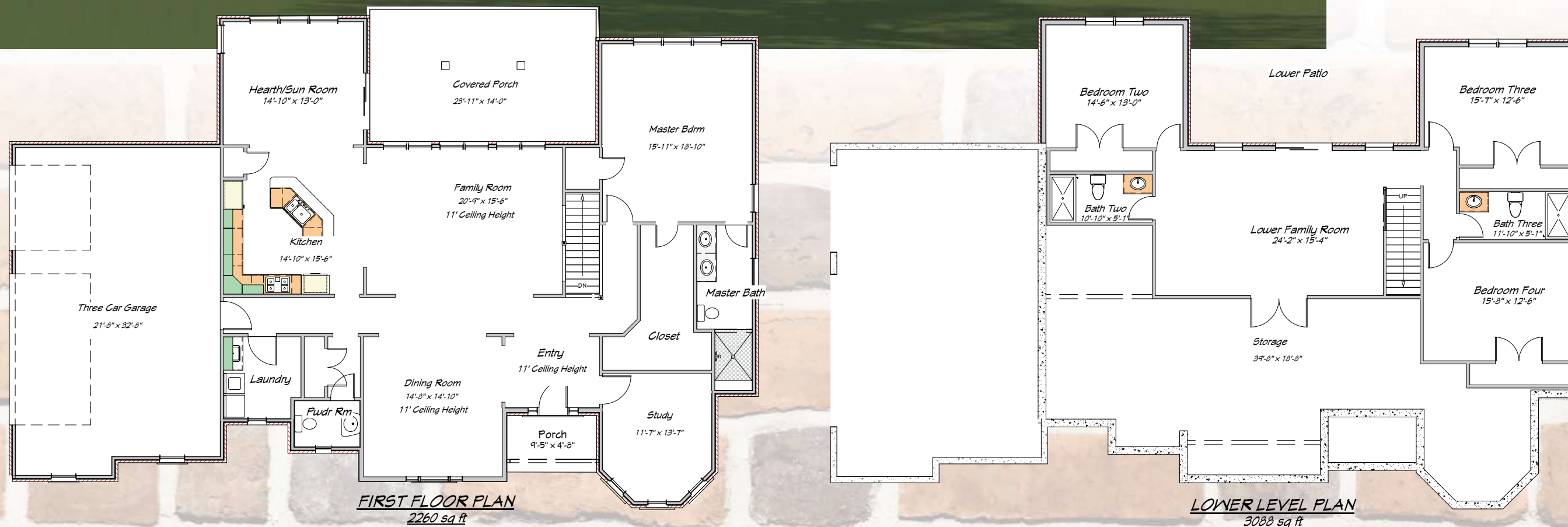
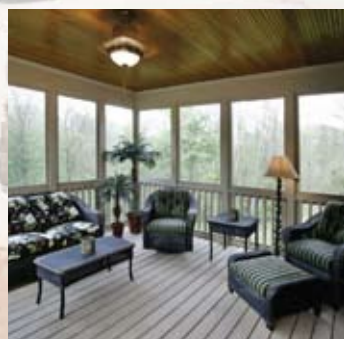
The Saint Joseph is an eye popping transitional ranch floor plan with a variety of offsets and angles. This four bedroom floor plan includes four car side entry garage, 16' dining room, 11' study, 11' family room, large master closet, and large walk-in pantry. The unique covered porch and sun deck area provide a perfect place for entertaining or just relaxing. Basement finishing explodes the total living space to over 4500 square feet.



Saint Matthews

The Saint Matthews Ranch

The Saint Matthews is an economical four bedroom ranch floor plan with a first floor master. The interior includes a variety of ceiling heights and the front turret compliments a rich front exterior. This floor plan includes three car side entry garage, sun room, rear covered porch, and three and one half baths. The finished basement plan proudly boasts over 3800 square feet of finished living space.



Tiffany

The Tiffany

The Tiffany is another of our economical ranch floor plans with three bedrooms on the first floor. The plan still includes many amenities sought after by today's buyer, such as a three car garage, covered porch, high ceilings, large kitchen, and a stately exterior. Custom basement finishing could be provided expanding the total living space to over 3800 square feet.

